

# DAIly program

MSC DIVINA Saturday, January 6<sup>th</sup> 2018



6:54am



5:59pm

TODAY'S FORECAST



26°C/79°F min  
28°C/82°F max

## FROM THE NAVIGATOR

8:00am

Arrival  
**CHARLOTTE AMALIE**

All aboard  
5:30pm

6:00pm

Departure  
**CHARLOTTE AMALIE**

Distance from Charlotte Amalie to St John's: 190 nautical miles.

8:00am\*

Arrival  
**ST. JOHN'S**

\*Weather permitting

### DISSEMBARKATION PROCEDURES:

Please note that upon arrival in Charlotte Amalie, disembarkation will not commence until we receive clearance from the local authorities. Please remember to carry a government issued photo ID / Passport with you and to show your Cruise Card at the gateway exit and entry when you return.

### CUSTOMS AND AGRICULTURE REGULATIONS

Please note that, due to Agriculture regulations and strict requirements of the local Authorities, it is prohibited to take ashore any kind of food, plants, seeds or shells and commercial merchandise. Heavy penalties will apply to guests found with these prohibited items.

### NAUTICAL INFORMATION

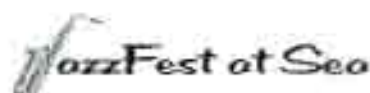
At around 4:12am the island of San Juan (Puerto Rico) will be at a distance of 20 nautical miles. Around 5:00am we will cruise through the islands of "Culebrita" and "Savana" (Virgin Passage).

At 8:00am we will embark the local pilot that will assist us during the arrival in the port of St. Thomas.

After we depart from St. Thomas, at around 6:30pm we will cruise on a East South Easterly.

Suggested dress tonight:

SMART CASUAL



Welcome  
to **CHARLOTTE AMALIE**  
(St. Thomas)

### CREW SAFETY DRILL

For the safety of everyone onboard, a general emergency exercise for crew members only will be held today at 10:15am. Guests are not required to participate.

### PORT INFORMATION

Charlotte Amalie is the capital of the United States Virgin Islands, and the most popular cruise port in the Caribbean. Charlotte Amalie (named after a Danish Queen) is where the ships dock, and where white and pastel houses are heavily sprinkled against a background of Emerald hills. Colourful slopes dock along the waterfront, and a few steps back, down alleyways, are old Danish warehouse buildings lined across from this is a world famous shopping centre. When walking in St. Thomas, you will see the bustle of the main street, and cool Emerald hills. There is also a beautiful view from the mountain top. The spiral of winding streets from the base of Savan. The quiet French countryside feeling on the far side of the island.

### EXCURSIONS

Departure time	EXCURSION	Meeting point	Deck
8:15am	STO34 - Two Island Power Cat	Cockpit area	15
8:15am	STO09 - Cartaway Sail & Snorkel	Cockpit area	15
8:15am	STO16 - The Ultimate Island Experience - 1st Departure	Cockpit area	15
8:15am	STO30 - Catamaran To Tuffet Cove	Cockpit area	15
8:30am	STO33 - Pinks, Panoramas & Murder	Cockpit area	15
8:45am	STO23 - Accessible Island Tour - 1st Departure	Cockpit area	15
8:45am	STO27 - Kayak, Wine & Snorkel Of Our Own	Cockpit area	15
9:15am	STO24 - Huggins Bay & Beachcomber Shopping	Cockpit area	15

## FROM THE EXCURSION OFFICE

**MAKE IT A DAY TO REMEMBER**  
Have a wonderful day ashore discovering the beauty of **ST. JOHN'S**.  
Still a few places available from the Excursion Office, deck 6

**Deck 6, midship**

### IMPORTANT INFORMATION

**"JAZZFEST IS ALSO AVAILABLE IN YOUR CABIN, TV CHANNEL 25 "**

### ONBOARD PAYMENTS

To make payments on board you must register your credit card (Visa, MasterCard, Diners, JCB, American Express and Discover) or use a debit/prepaid card (Maestro, Visa Electron, Visa Debit, MasterCard Debit) to make a deposit on your Cruise Card at one of the Cruise Card Activation Points on decks 5 and 6. It is also possible to leave a cash deposit at Conciergerie - Guest service. This can be done at any time from embarkation until 11:00pm the following day, although your Cruise Card is active from the moment you board. Remember that your children's Cruise Cards will also be activated for purchasing, so please ensure they do not use them without your authorisation. An itemised statement will be sent to your cabin at the end of the cruise though you may check your account at any time using the ITV system in your stateroom. Any remaining balance on your Cruise Card won't be credited automatically to your debit or prepaid card. It will be reimbursed in cash in the onboard currency. For further details, please refer to the "Onboard Payments" flyer distributed on embarkation and available at Conciergerie - Guest service.

### WHEN GETTING BACK ONBOARD...

The security of our guests and the crew is our priority. When getting back on board you may be submitted to a security check twice, the first time - in port and the second - on board. Thank you for your cooperation.

### INSECT BITE PREVENTION

In order to avoid bites due to the possible presence of mosquitoes and other insects, we advise you to cover exposed skin by wearing long-sleeved shirts, long pants and hats and use an appropriate insect repellent, when going ashore during this cruise.

### 24/7 ONBOARD LIBRARY SERVICE

Take advantage of our wide range of titles available 24/7 in the library on deck 16 and simply return any borrowed books by 12noon on the day before you disembark.

## ENTERTAINMENT HIGHLIGHTS

### PANTHEON THEATRE

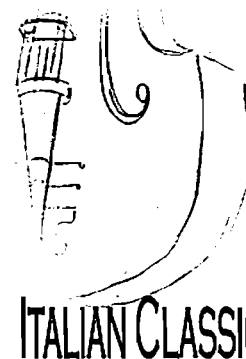
Tonight your  
Assistant Cruise Director  
Arturo  
presents:

### ITALIAN CLASSICS

*An evening of the most popular  
classical Italian songs*

*Main Artistes:*

*Monna Dia, Alexandre Bondarchuk  
and  
the MSC Divina International Dancers*



MSC

Please note that due to copyright restrictions, the use of recording devices, such as video cameras and mobile phones, is not permitted during performances. The theatre is a strictly non-smoking environment and food and drink are not permitted. Strobe lighting, laser and smoke effects will be used during performances. These are harmless and non-toxic. Please also remember that reserving seats is not allowed in the theatre. Thank you and enjoy the show!

**decks 6 and 7 7:00pm - Guests with 2<sup>nd</sup> dinner seating  
9:00pm - Guests with 1<sup>st</sup> dinner seating**

### GOOD MORNING MSC DIVINA



Wake up to the best morning TV show on the seas! Turn on, tune in and join your Cruise Director Darren for an informative, interactive look at the day ahead.

**6:00am - 2:00pm, Stateroom TV channel 6**

### MIX LATINO DANCE LESSON

Learn to dance and impress your friends! Our dance instructors Rosalyn and Fernando are ready to teach you some amazing moves.

**10:30pm, Aqua Park\*, deck 14**

### THE BET

Bet on which members of our Entertainment Team will do best in a series of 5 performances, then sit back and enjoy the show: prizes for the winners!



**11:00pm, Aqua Park\*, deck 14**

### TROPICAL PARTY

Join your Entertainment Team to experience the sense of a tropical atmosphere. You'll be surprised by your own desire to dance!

**11:30, Galaxy Disco, deck 16**

# SERVICES & OPENING HOURS

Time	Telephone	Deck
<b>CONCIERGE - Guest service</b>		
24h	Push CONCIERGE or 2891	15
<b>WAKE-UP CALL</b>		
Push  and follow instructions		
<b>ROOM SERVICE</b>		
24h	Push  and follow instructions	
Snacks and beverages from our Room Service menu and our Bar lists are available 24 hours a day. Except in cases of illness, restaurant meals are not available in staterooms.		
<b>MEDICAL EMERGENCY</b>		
	115	
<b>MEDICAL CENTER (charges apply)</b>		
9:00am - 12noon	2660	4
4:00pm - 8:00pm		
With the exception of regular motion sickness medication, there is an additional charge for the medical services available on board. Medical services can be requested at Reception - Guest service. The list of applicable charges are displayed at the Medical Center (deck 4)		
<b>CYBERCAFÉ (with Cruise key card)</b>		
24h		5
<b>EXCURSION OFFICE</b>		
4:30pm - midnight	2804/2805	6
<b>MSC VOYAGERS CLUB INFOPOINT - CRUISE CONSULTANT</b>		
9:00am - 10:00am	6093	6
5:00pm - 10:00pm		
<b>DUTY FREE SHOP (Tobacco, spirits and snacks)</b>		
6:30pm - Midnight	2774	6
<b>LA CARAMELLA (Candy &amp; Toys)</b>		
6:30pm - Midnight	2777	6
<b>CASINO VENEZIANO (minimum age: 18+)</b>		
Slot Machines: from 6:30pm	2698	6
Tables: from 7:00pm		
<b>SHOPS (La Profumeria, La Boutique, L'Angolo dell'Oggetto, Il Gioiello, MSC Logo Shop)</b>		
6:30pm - Midnight		6/7
<b>PHOTO SHOP-PHOTOGRAPHERS</b>		
4:00pm - 11:30pm	2706	7
<b>THE POOL SHOP</b>		
Closed		14
<b>MSC AUREA SPA</b>		
8:00am - 9:00pm	2732	14
<b>THERMAL AREA</b>		
8:00am - 9:00pm		14
<b>FITNESS CENTER - with gym instructor</b>		
6:00am - 10:00pm	2732	14
The gym welcomes guests ages 14 years and older from 6:00am to 10:00pm every day. Please wear appropriate sportswear, including sneakers (for your own safety, no open-toed shoes are permitted). As a courtesy to your fellow guests, we ask that you spend no more than 30 minutes on any individual piece of equipment.		
<b>POOLS</b>		
External: 7:00am - 8:00pm*		14
Internal: 7:00am - 8:00pm		14
<b>THE GARDEN POOL (adults only)</b>		
External: 7:00am - 8:00pm*		15
<b>WHIRLPOOLS</b>		
External: 7:00am - 8:00pm*		14/15/16
Internal: 7:00am - 10:00pm		14
Any pool towels and/or personal items left unattended on deck/sun loungers for more than 30 minutes may be removed and taken to Reception - Guest service.		
<b>I PUFFI (THE SMURFS) - Mini &amp; Juniors Club</b>		
9:00am - 11:00pm	2890	15
<b>KIDS AROUND THE CLOCK (charges apply)</b>		
11:00pm - 2:00am	2890	15
Reservations accepted before 6:00pm only.		
<b>GRAFFITI'S - Teens &amp; Young Club</b>		
4:00pm - 6:00pm	2877	15
8:00pm - Midnight		
<b>WATER SLIDE* (minimum age: 8+ and taller than 47.24 inch)</b>		
10:00am - 1:00pm		15/16
2:00pm - 5:00pm		
<b>VIRTUAL WORLD, 4D CINEMA, FORMULA 1 SIMULATOR (Please note that sports equipment, board games and playing cards are available on request - till 8:00pm)</b>		
10:00am - 12noon	7756	16
4:00pm - 10:00pm		
<b>INTERNATIONAL HOST WESLEY</b>		
5:00pm - 10:00pm	6166	
<b>TOP 18 EXCLUSIVE SOLARIUM (charges apply)</b>		
7:00am - 10:00pm		18

\* Weather permitting.

FOLD HERE



# MSC YACHT CLUB

# DAILY planner

**MSC DIVINA Saturday, January 6<sup>th</sup> 2018**

**CHARLOTTE AMALIE**

<b>YC - BREAKFAST, DINING &amp; SNACKS</b>		
Time	Service	Deck
<b>Top Sail Lounge</b>		15
7:00am - 10:30am	Continental Breakfast	
11:30am - 3:30pm	Snacks	
4:00pm - 5:00pm	Tea Time	
5:30pm - 8:30pm	Aperitif	
9:00pm - 1:30am	Chocolate Surprise	
<b>The One Pool*</b>		18
7:30am - 11:00am	Continental Breakfast	
11:00am - 11:30am	Croissant	
12noon - 3:00pm	Buffet Lunch	
3:30pm - 6:00pm	Fruit Bar & Snacks	
6:30pm - 7:30pm	Pre Dinner Snacks	
<b>Le Muse</b>		15
7:00am - 9:00am	Breakfast	
12noon - 1:30pm	Lunch	
6:00pm - 10:00pm	Dinner	
<b>Buffet Calumet &amp; Manitou available 20/24h</b>		14
24h	Coffee, tea, water, ice and creamers	
6:00am - 12noon	Breakfast	
12noon - 5:00pm	Buffet Lunch	
12noon - 1:00am	Pizza	
12noon - 6:00pm	Burgers, Hot Dogs & Sandwiches	
6:30pm - 9:30pm	New Corner Grill	
3:00pm - 5:00pm	Afternoon Snacks	
6:00pm - 9:30pm	Dinner Buffet	
9:30pm - 2:00am	Evening Snacks	
<b>Sports Bar</b>		7
12noon - 1:00am		

\*weather permitting

## SERVICES

Room Service 24h

## SPECIALITY DINING\*

6:00pm - 10:30pm	Eataly Steakhouse **	7
6:00pm - 10:30pm	Ristorante Italia **	7
6:00pm - Midnight	Pizza Eataly *	7
6:00pm - 10:30pm	Galaxy Disco- Restaurant **	16
6:00pm - Midnight	Pizza delivery - call 2891 (Conciergerie)	cabin

\* charges apply  
 \*\*reservations: call 6102 from 12noon to 3:00pm and from 6:00pm to 8:00pm.  
 Cancellations must take place at least 24 hours before the previously arranged booking time.  
 Otherwise a penalty charge of US\$5 per person will be applied.

# TODAY'S EVENTS AND ACTIVITIES

TIME	ACTIVITIES	LOCATION	DECK	
10:00am-10:30am	Meeting point with the Cruise Staff Dance and drinks, food and drinks	Virtual World	18	
10:00am-4:00pm	Golf Hole in 1* (Unlimited)	Aqua Park	14	
MORNING	8:00am-9:00am	Good Morning MSC Divine	Stateroom TV Channel 5	
	9:00am	Stretching*	Aqua Park	14
	9:30am	Zenobics	Aqua Park	14
	10:00am	Crazy Mini Golf*	Aqua Park	14
	10:30am	Ocean Traps*	Aqua Park	14
	10:30am	Q Gardena Sports*	Sports Arena	16
	10:45am	Morning Trivia (Historical Figures)	Golden Jazz Bar	7
	11:00am	Ping Pong Tournament (minimum age 15)	Sports Arena	16
	11:30am	Tattoo Challenge (Unlimited)	La Luna Piano Bar	7
	11:30am	Fox Trot Dance Lesson	Galaxy Disco	16
AFTERNOON	12:00pm	Sudoku Play (Unlimited)	La Luna Piano Bar	7
	2:00pm-4:00pm	Bridge Play (Unlimited)	Galaxy Disco	16
	3:00pm	Q Borealis Sports*	Sports Arena	16
	3:30pm	Crazy Darts*	Aqua Park	14
	4:00pm	Guess The Cocktail Price*	Aqua Park	14
	4:00pm	Afternoon Trivia	La Luna Piano Bar	7
	4:30pm	Aerostretching*	Aqua Park	14
	4:45pm	Huffington Trivia (Archaeology)	Golden Jazz Bar	7
	5:00pm	Volleyball Tournament* (minimum age 18)	Sports Arena	16
	5:00pm	Friends of Dr. Bob And Bill W. (Unlimited)	Sky & Stars Library	18
EVENING	7:00pm	Italian Classics (For dinner seating)	Restroom Theatre	6/7
	7:00pm	MSC Cinema of Fables: Cats 3 Rating PG-13	Aqua Park	14
	8:45pm-9:30pm	Hospitality Desk with our special Italian food vicini	Reception Area	5
	8:45pm	Name That Tune 80's	Golden Jazz Bar	7
	8:45pm	Q Dream Cruise*	Aqua Park	14
	8:45pm	ETTY 10 - Best Buy Sale & Gifts	ETTY Boutique	9
	8:45pm	Italian Classics (For dinner seating)	Restroom Theatre	6/7
	10:30pm	Latina Mix Dance Lesson	Aqua Park	14
	11:00pm	The Bet	Aqua Park	14
	11:00pm	Tropical Party*** Sun 21 July	Galaxy Disco	16

1. General Assembly  
2. Ship's Party  
3. MSC Family Address

\*\*\* 18 Only - Age Night Club Dancing (Guests must be 18 years or older for admission to the club)  
2. 21 and Above Cruise Cards (Guests under the age of 21 cannot be in any public area unless accompanied by their parents or guardian)

# FOR YOUR LISTENING AND DANCING PLEASURE

## "A TOUCH OF CLASS"

A sophisticated Piano bar with music performed by Fabiano & Secret Duo from 6:00pm until late  
Top Sail Lounge - deck 15

## "GREAT CLASSICS"

Old favorites and timeless classics performed by Secret Duo & Gloria  
From 5:30pm until late  
Divina Bar - Reception Area decks 5 and 6

## "MUSIC & WINE"

Music performed by Morten & Anna  
From 7:45pm until late  
La Cantina di Bacco - deck 7

## "COFFEE BREAK"

Do a spot of shopping, have a coffee or enjoy an ice cream in a lively, fun environment.  
Music performed by Kenroy  
From 6:45pm until late  
Piazza del Doge - deck 6

## "UNFORGETTABLE"

Listen to the most beautiful songs ever written, performed by Atho & Sonia  
Request your favorites!  
From 6:30pm until late  
La Luna Piano Bar - deck 7

## "MUSIC & DANCING"

with The 8 Cats  
From 7:15pm until late  
Golden Jazz Bar - deck 7

## "LET'S DANCE..."

International dance music  
with Groove Island  
From 11:30pm until late  
Aqua Park\* - deck 14

Note: during live performances musicians may take short breaks between sets.

# BARS & LOUNGES

Time	Bar	Deck
6:30am - 1:00am	Divina Bar (Golden Jazz)	5
8:00am - 1:00am	Piazza del Doge	6
5:00pm - 11:30pm	Silver Lounge	6
5:00pm - 1:00am	The Cigar Lounge	6
6:00pm until late	Casino Veneziano	6
10:30pm - 1:30am	Black & White Lounge	7
7:00pm - 11:00am	Caffe Italia	7
3:00pm - 1:00am	Golden Jazz Bar	7
4:30pm - 1:00am	La Cantina di Bacco	7
5:00pm - 1:00am	La Luna Piano Bar	7
12:00pm - 1:00am	Sports Bar	7
2:00pm - 9:00pm	Poseidon Bar	14
8:00am - 1:00am	Tritone Bar	14
2:00pm - 9:00pm	Le Sirene Pool	14
6:00am - 7:00pm	MSC Aurea Spa	14
8:30am - 1:00am	The Garden Bar (adults only)	15
10:00pm until late	Galaxy Disco Bar	16
6:00am - 2:00am	Top Sail Bar	15
7:30am - 8:00pm	The One Bar*	18

\*Weather permitting.

## MSC VOYAGERS CLUB INFO POINT

### MSC VOYAGERS CLUB INFOPOINT

Book today your next MSC cruise directly on board and enjoy exclusive privileges!

Contact your Cruise consultants Juiz & Rachel, at the Silver Lounge (right side), deck 6, between 9:00am-10:00am and 5:00pm-10:00pm, or call 6093.

Juiz & Rachel will also be at your disposal for MSC Voyagers Club info and requests\*.

## OUR AGENCY IN CHARLOTTE AMALIE

Virgin Port Services, LLC  
9003 Havensight Mall Suite 303 St. Thomas, USVI 00802

Tel. + 52 983 834 5674

Fax +340 775 1152

Tel. MSC Divina: 0087 0765 0971 63/4/6\*

\* Satellite number - please check with your telephone operator.



# PORT SHOPPING

## ST. THOMAS

LUXURY BRAND WATCHES & AUTHORIZED RETAILERS

### LUXURY TIMEPIECES & JEWELRY

Crown Couture Diamonds • Diamonds International  
 Forevermark • Diamonds International  
 Hublot • Diamonds International • Hublot Boutique  
 Zenith • Diamonds International • Di Watch & Design

### FINE TIMEPIECES

Bombardier • Diamonds International • Di Watch & Design  
 Bremont • Di Watch & Design  
 Bulova • Diamonds International • Di Watch & Design  
 Longines • Diamonds International • Di Watch & Design  
 Philip Stein • Philip Stein Boutique at Diamonds International  
 • Di Watch & Design  
 WOLF Watch Wonders • Diamonds International  
 • Di Watch & Design

### FINE DIAMONDS & DESIGNER JEWELRY

Crown of Light Diamonds • Diamonds International  
 • Di Watch & Design  
 Dancing Collection • Milano Diamond Gallery  
 Gift Diamond Collection • Diamonds International  
 • Di Watch & Design  
 Kaban • Diamonds International • Di Watch & Design  
 Korite Ammolite • Diamonds International  
 • Ammolite Gallery of St. Thomas  
 Mark Henry Alexandrite • Milano Diamond Gallery Downtown  
 Philip Stein Sleep Bracelet • Philip Stein Boutique at  
 Diamonds International • Di Watch & Design  
 Safi Kilima Tanzanite • Diamonds International  
 • Di Watch & Design

### PORT & SHOPPING CHANNEL

Turn in to the Port Channel for the latest updated port and shopping information.

Your Port Shopping Guide is available in your MP cards and to answer your first minute questions for shopping ashore and navigating your way downtown.

### Shopping Ashore Events

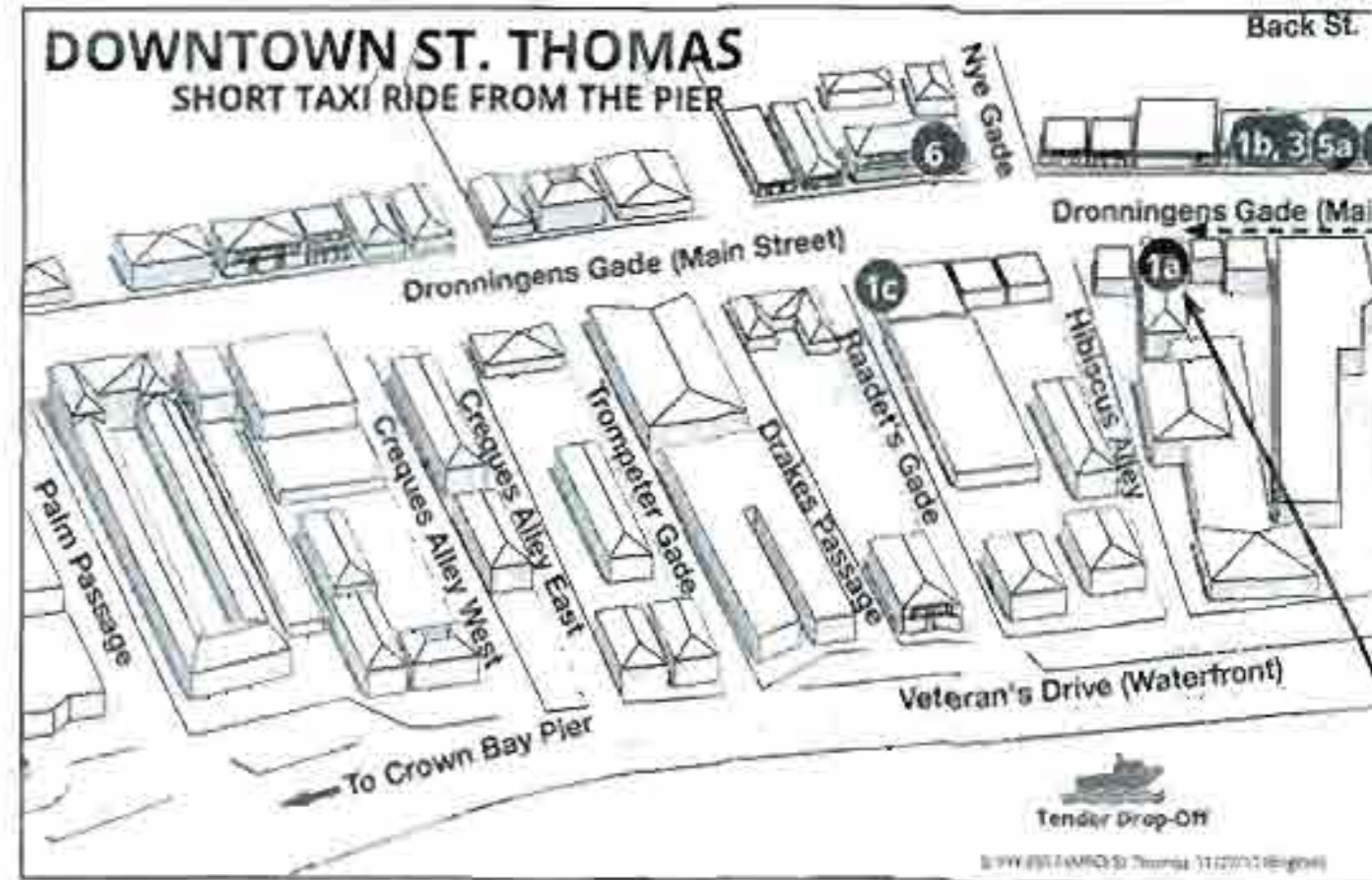


Time: \_\_\_\_\_  
 Highlights: \_\_\_\_\_



Time: \_\_\_\_\_  
 Highlights: \_\_\_\_\_

Only the stores on this map are backed by



### Start Here

#### 1a-e DIAMONDS INTERNATIONAL

- *#1 Recommendation for Diamonds for 30 Years*
- Large stock of certified white/colored diamonds (GIA, AGS, EGL)
- Is it time for an upgrade? Customize your jewelry with us today
- Experience the sparkle of the Crown of Light Diamond
- Forevermark from the De Beers Group of Companies
- Help rebuild the Caribbean with a charity charm today
- Collect your FREE charm bracelet and port charm
- Brands: Crown Couture, Forevermark, Gift, Kaban, Korite Ammolite, Blue Heaven, Safi Kilima and Sara G

#### 2 DIAMONDS INTERNATIONAL WATCH & DESIGN

- *Fine Timepieces and Designer Jewelry*
- Discover the finest luxury timepieces for him and her
- Limited edition Crown of Light Hublot watch available
- First limited edition, sports, dressy, daily or connoisseur watches
- Timepieces: Bombardier, Bremont, Bulova, Philip Stein, WOLF Watch Wonders, Zenith, Audemars Piguet, Breitling and more

#### 3 AMMOLITE GALLERY OF ST. THOMAS

- *Rare and Exquisite Ammolite*
- The largest of 4 Korite Ammolite boutiques in the world
- Lifetime guarantee with Korite Ammolite purchase
- Large selection of upscale rings, pendants, bracelets and more

#### 4 HUBLOT BOUTIQUE

- *The Art of Fusion*
- Limited edition Crown of Light Hublot watch available
- Large selection of Classic Fusion, King Power and Big Bang
- Prestigious "Watch of the Year" for two consecutive years

#### 5a-c MILANO DIAMOND GALLERY

- *Manufacturer of Fine Diamond & Gemstone Jewelry*
- Dancing Diamond Collection - diamonds and stones with every fire
- Mark Henry Alexandrite - experience this must see rare gemstone
- Brands: Fruit Watches, LeVian Chocolate Diamonds, Luminox Watch
- Large selection of luscious green emerald jewelry - a wardrobe must
- Lifetime upgrade policy on all jewelry and 1 year product warranty

#### 6 MR. TABLECLOTH

- *The Original Linen Store*
- Microfiber, stain-resistant and "no-iron" tablecloths
- Ladies evening jackets starting at \$29.99
- Fine cotton nightgowns, day-to-night maxi dresses and jewelry hills



Crown of Light



Breitling



Korite Ammolite



Hublot

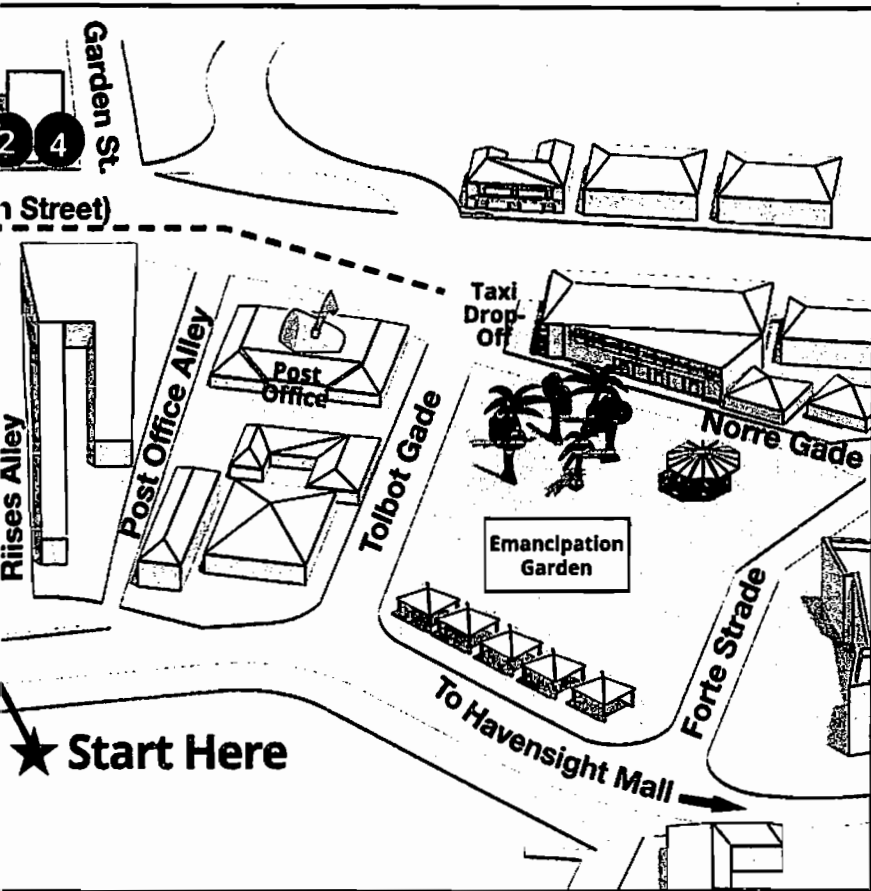


Safi Kilima



Zenith

the shopping guarantee.



**DI DIAMONDS<sup>®</sup>**  
INTERNATIONAL

Pick up your **FREE**  
Collectible Charm Bracelet

Today's Charm is:  
**Shopping Bag**

(No purchase necessary)



**KORITE**  
AMMOLITE

A must see Gemstone  
Exclusively available at  
Diamonds International

**Live in Tune**

Experience the Technology of

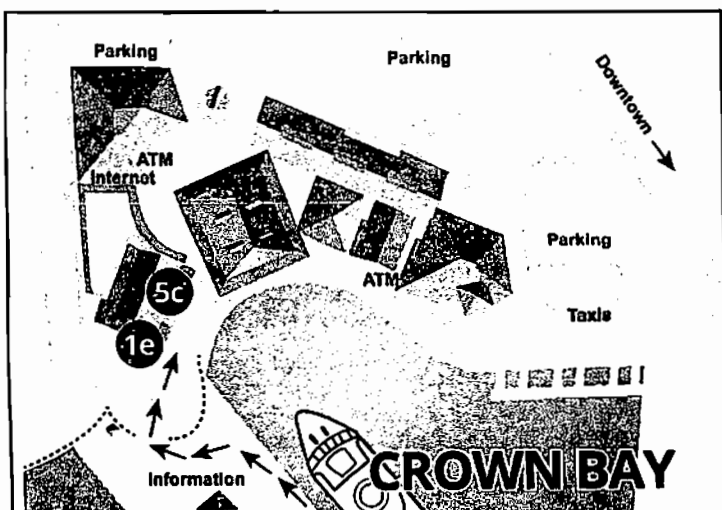
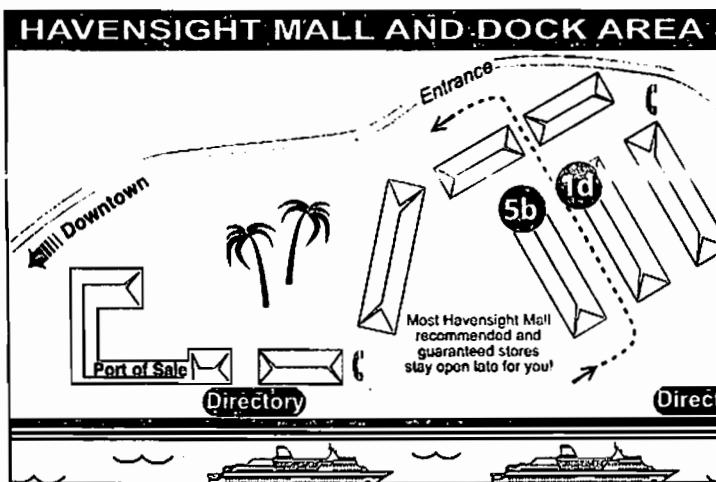
**PHILIP STEIN**  
LIVE IN TUNE

Fine Selection  
of Interchangeable  
Straps and Bracelets

**MILANO**  
DIAMOND GALLERY

Pick up your  
Complimentary  
**St. Thomas**  
Treasure Coin

(No purchase necessary)



**VISA** everywhere  
you want to be

Past

Present



Old Mine Cut



Round Brilliant

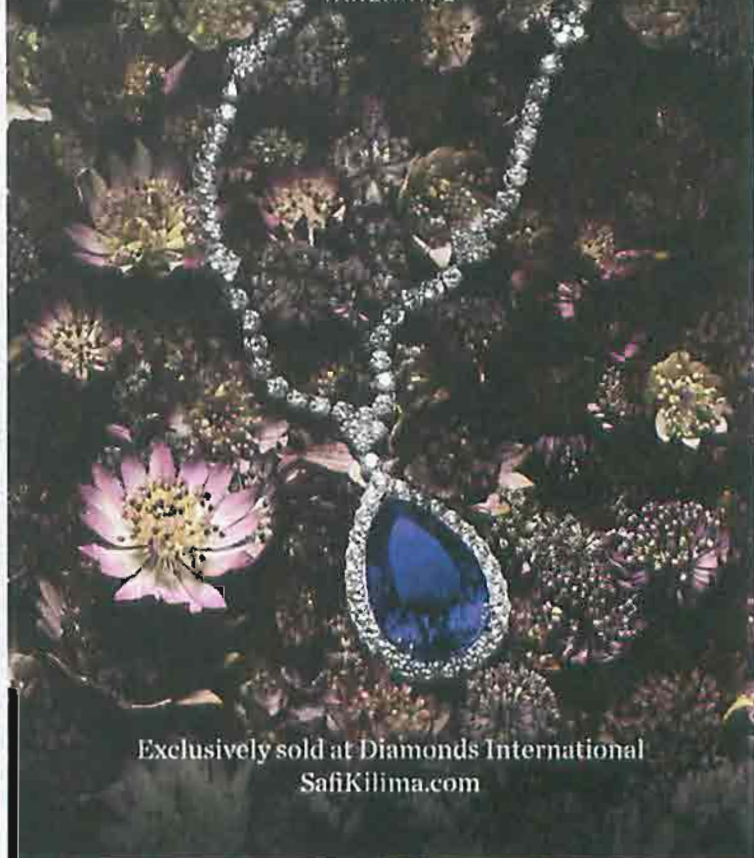
FUTURE



CROWN OF LIGHT™

Exclusively at  
DI DIAMONDS INTERNATIONAL

SAFI KILIMA  
TANZANITE



Exclusively sold at Diamonds International  
SafiKilima.com

DEL SOL  
COLOR CHANGE

NOT YOUR  
AVERAGE SHIRT

Without Sun



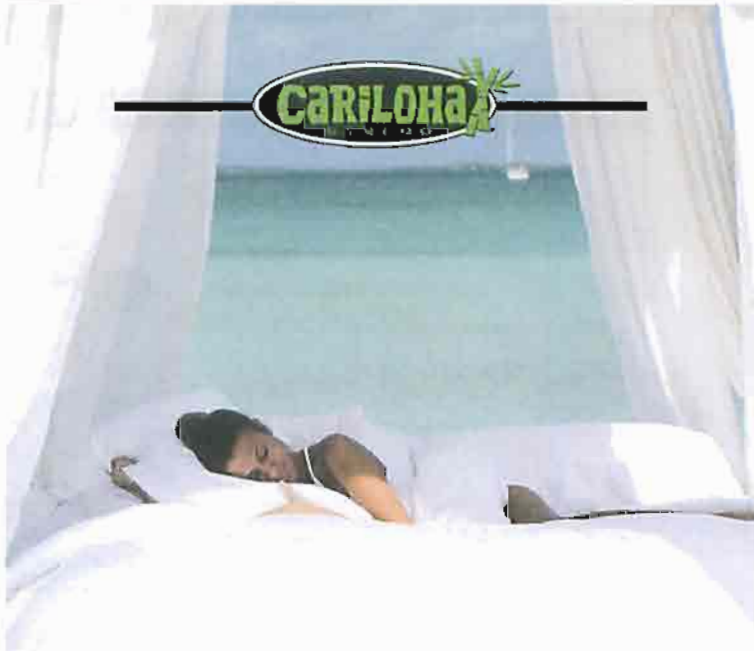
With Sun

SEE IT CHANGE COLOR IN THE SUN.

PORT SHOPPING BUYER'S GUARANTEE

The Port Shopping Program is operated by The PPI Group and the stores listed on this map and mentioned in the Port & Shopping Presentations have paid an advertising fee to promote shopping opportunities ashore. These stores provide a 60-day guarantee after purchase to MSC's guests. This guarantee is valid for repair or exchange. Buyer's negligence and buyer's remorse are excluded from the guarantee. Only appraisals secured by a guest from independent gemologists not affiliated with any retail jeweler will be considered in order to determine quality and value of jewelry related to any claims. Price paid for merchandise or verbal claims or agreements between merchant and guest will not be grounds for returns. Electronics and watches must be returned by the guest to the respective manufacturer. All purchases, including fragile items, must be checked before leaving the store. Please do not mail merchandise without prior authorization. Guests are responsible for all shipping and appraisal costs. Guest claims arising from purchases made at participating stores within 60 days should be directed to the Customer Service Department at the PPI Group; 6261 NW 6th Way, Suite 100, Fort Lauderdale, FL 33309, Phone: (954) 377-7777 or toll free: 1-888-774-4768, Email: mscservice@ppiigroup.com. Should guests require assistance during this cruise regarding a purchase from a store listed on this map, please contact the Port Shopping Guide onboard for immediate assistance.

CARILoha  
LUXURY



INDULGE IN NATURAL LUXURY

Enjoy Cariloha's Softest Bedding on the Planet™,  
Made of Viscose from Bamboo.